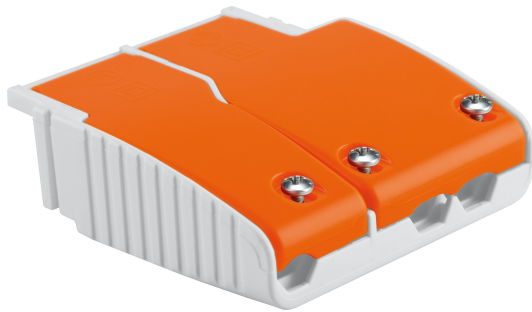


## PRODUCT DATASHEET OT CABLE CLAMP B-STYLE LP TL

OPTOTRONIC® Cable Clamp | Driver accessories



---

### Areas of application

- Downlights, flat luminaires
- Suitable for different cable types
- Suitable for indoor installations

---

### Product benefits

- Simple and quick cable mounting
- Sufficient space for cable connection
- Cost-effective and space-saving solution (TL version)
- Free cable connection thanks to open flaps
- Immediate installation thanks to pre-assembled cable clamps

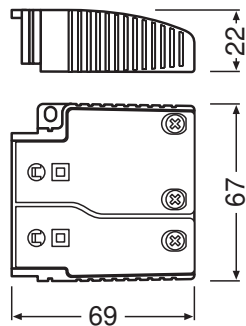
---

### Product features

- Easy to install and flexible cable clamps
- Separate cable clamps for primary and secondary side
- Pre-fixed, captive screws
- Through-looping (TL version)

TECHNICAL DATA

Dimensions & Weight



Length	50.0 mm
Width	67.00 mm
Height	22.0 mm
Product weight	35.00 g

Temperatures & operating conditions




Max.housing temperature in case of fault	110 °C
Permitted rel. humidity during operation	5...85 % <sup>1)</sup>

<sup>1)</sup> Maximum 56 days/year at 85 %

LOGISTICAL DATA

Temperature range at storage	-40...+85 °C
------------------------------	--------------

DOWNLOAD DATA

Documents and certificates		Document name
	User instruction / safety instructions	OT CABLE CLAMP B-STYLE LP
CAD/BIM files		Document name
	CAD STEP 3D	CC_B-LP-Style
	CAD data 3D PDF	CAD data PDF OT Cable Clamp B-Style LP

LOGISTICAL DATA

Product code	Packaging unit (Pieces/Unit)	Dimensions (length x width x height)	Gross weight	Volume
4052899530997	Unpacked 1			
4052899531000	Shipping box 20	256 mm x 146 mm x 82 mm	777.00 g	3.06 dm <sup>3</sup>

The mentioned product code describes the smallest quantity unit which can be ordered. One shipping unit can contain one or more single products. When placing an order, for the quantity please enter single or multiples of a shipping unit.

DISCLAIMER

Subject to change without notice. Errors and omission excepted. Always make sure to use the most recent release.